



CERTIFICATE OF ANALYSIS

20 Martin Ross Avenue, North York, ON, M3J 2K8, CANADA
Tel: (416) 665-9696, Fax: (416) 665-4439
Email: orders.trc@lgcgroup.com Website: www.trc-canada.com

1. Identification

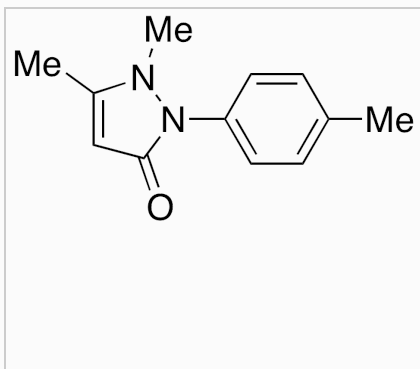
Catalogue Number: M338620

CAS Number: 56430-08-1

Product: 4'-Methylphenazone

Synonym: 1,2-Dihydro-1,5-dimethyl-2-(4-methylphenyl)-3H-pyrazol-3-one; 2,3-dimethyl-1-p-tolyl-3H-pyrazol-3-one; 2,3-Dimethyl-1-(4-methylphenyl)-3-pyrazolin-5-one;

Structure:



Molecular Formula:

C₁₂H₁₄N₂O

Molecular weight:

202.25

Source of Product:

Synthetic

Solubility:

Chloroform (Slightly),
Methanol (Slightly)

Lot Number: 5-WHH-72-2

Purity: 98%

Shipping Condition: This Product Is Stable To Be Shipped At Room Temperature

Storage Condition: 4°C

2. Warning

Warning 1: Not Determined

Warning 2:

Warning 3:

3. Analytical Information

| Tests: | Specifications: | Results: |
|--------------------|-------------------------------|--------------------------------|
| Appearance | Off-White to Pale Brown Solid | Off-White to Pale Beige Solid |
| NMR | Conforms to Structure | Conforms |
| MS | Conforms to Structure | Conforms |
| Elemental Analysis | Conforms | %C: 71.16, %H: 7.42, %N: 13.90 |
| HPLC Purity | >95% | 99.50% (240 nm) |

Additional Information:

TLC Conditions: SiO₂; Dichloromethane : Methanol = 9 : 1; Visualized with UV and AMCS; Single Spot, R_f = 0.50. Elemental Analysis: (Theoretical) %C: 71.26, %H: 6.98, %N: 13.85

Purity is based on the analytical results of the tests performed. NMR and Elemental Analysis (if available) may have an accuracy of ± 2%. Isotopic purity is based on mass distribution observed. The contents of the specifications are subject to change without advance notice, and the specification values displayed here are the most up to date values.

4. Signatures

| Reviewed By | Reviewed By | C of A Approved By | Test Date | Retest Date |
|-------------|---------------|--------------------|-----------|-------------|
| Eric Beaton | Toni Rantanen | My Nguyen | 2/24/2020 | 2/22/2027 |